



Platina, Mumbai, Schüco system FW 60+, ASS 50

Lumani Schüco: Introduction

Employees worldwide
Mitarbeiter/-innen
weltweit

ca. **4.800**

Germany/Deutschland
ca. **3.350**

International
ca. **1.450**



Head Office Bielefeld
Founded: 1951 in East-Westphalia
Unternehmenszentrale Bielefeld
Gründung: 1951 in Ostwestfalen

Expertise
Window systems, door systems
and façade systems
Kompetenzen
Fenster-Systeme,
Türsysteme und
Fassaden-Systeme

MORE THAN
MEHR ALS **80**
COUNTRIES
LÄNDER

32
POSITIONS
STANDORTE

12.000
PARTNER

Schüco International KG

Since 1951



..... to market leader



About Lumani

LUMANI Systems is part of Damsun Group an exclusive partner of SCHUCO-GERMANY, with head office at Ludhiana, having sales & operations in Punjab, Himachal, Haryana, Delhi-NCR, Uttrakhand, Rajasthan and J&K.

LUMANI Schuco is one of the leading suppliers of high quality aluminum solutions for windows, doors, skylights, louvers and facades, which are used in buildings all over the world. They meet the highest requirements in terms of design, comfort and security which is simultaneously reducing CO2 emissions through energy efficiency.

Together with its worldwide network with architects and customers, schuco creates sustainable building envelopes that focus on people and their needs in harmony with nature and technology.

LUMANI Aluminium Windows and Doors outperform in providing Insulation-Thermal Insulation, Sound Insulation and Dust Insulation. Always pushing the boundaries of innovation, LUMANI Schuco makes the most intelligent use of increasingly scarce raw materials, while delivering window and door designs that outperform the industry standards. The inter-compatible components together with comprehensively tested and certified system features offer a high level of quality.



VISION

Our Vision is to become global Company focused on excellence with technology & Innovation

VALUES

Our values are Leadership, Commitment, Trust & Team Work

BRAND PROMISE

"10 Years" Assured Service Guaranteed.

NETWORK



- Srinagar
- Jammu
- Pathankot
- Dharamshala
- Shimla
- Amritsar
- Hoshiarpur
- Jalandhar
- Ludhiana
- Patiala
- Bathinda
- Malout
- Sirsa
- Chandigarh Tricity
- Ambala
- Panipat
- Rohtak
- Yamunanagar
- Haridwar
- Roorki
- Massorrie
- Rishikesh
- Dehradun
- Suratgarh
- Ganganagar

TEAM



Lumani Schüco facility



Production & fully integrated warehousing facility :-

Training Centre



KEY FACTS

- TC in south India/Bangalore
- 5000 sq.ft Training Area
- Full range of Schüco machinery
- Manufacturing of Architectural samples
- Customer Trainings conducted by Service Engineering Teams
- Schüco Service Engineering in place
Industrial electrical & pneumatic
- Infrastructure set up

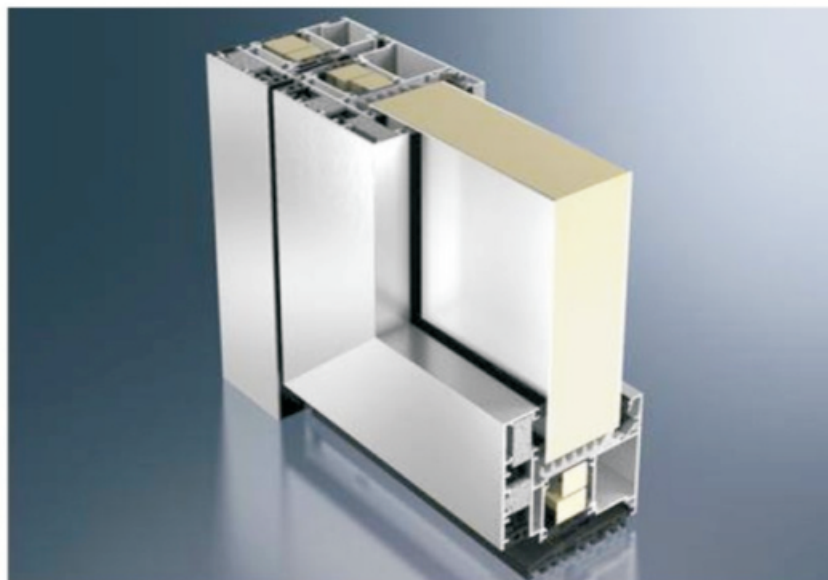
USP of LUMANI SCHUCO SYSTEM

- **Tested & certified** systems
- Fully integrated **German solutions**
- Designed as per **Indian weather conditions**
- **Slim line** system
- Single source of supply, even screw **made in Germany**
- 10 Years **reliable** warranty
- Sales & Technical Assistance



INSULATION

- Sound
- Dust
- Insects
- Thermal-Heat
- Wind





Project References:



Project Type	Residential
Year	2015
Architect	Ar. Ranjodh Singh, Ar. Narinder Singh, Habitat
Location	Ludhiana
System Color	Sparkling Grey
System Type	Troptec - ASS39NI, AW40NI

Project Type	Residential
Year	2015
Architect	Ar. Ranjodh Singh, Habitat Architects
Location	Amritsar
System Color	Schuco Grey
System Type	ASS50NI, AWS50, ADS50





Project Type	Residential
Year	2015
Architect	Ar. Shiv Dada, Ar. Mohit Chawla, 23DC
Location	Jalandhar
System Color	Sparkling Grey
System Type	Facade -ASS39NI, AW40NI, AW50NI

Project Type	Residential
Year	2015
Architect	Ar. Chetan Ahluwalia, Architect File
Location	Chandigarh
System Color	Grey Sahara
System Type	ASS39NI, AW40NI





Project Type	Commercial
Year	2015
Architect	Ar. Ashwani Duggal, Subash & Associates
Location	Chandigarh
System Color	Grey
System Type	ADS50NI, AW40NI

Project Type	Residential
Year	2016
Architect	23 DC Architects, Ar. Shiv Dada, Ar. Mohit Chawla
Location	Jalandhar
System Color	Grey
System Type	ASS39NI, AW40NI, ADS50NI





Project Type	Commercial
Year	2016
Architect	Ar. Rajiv Mahajan, Aadharshila Architects
Location	Chandigarh
System Color	Sparkling Grey
System Type	SC50NI, ADS50NI

Project Type	Villa
Year	2016
Architect	Ar. Aman Aggarwal, Charged Void
Location	Shivalik City (Kharar)
System Color	Sparkling Grey
System Type	ASS39NI, AW40NI, Facade





Project Type	Residential
Year	2016
Architect	Ar. Chetan Ahluwalia, Architect File
Location	Dehradun
System Color	Sparkling Grey
System Type	ASS39NI, ADS50NI, AWS50NI, AW40NI

Project Type	Residential
Year	2016
Architect	Ar. Mandeep Singh, Living Space
Location	Malerkotla
System Color	Sparkling Grey
System Type	Facade - ASS39NI, AWS40NI





Project Type	Residential
Year	2016
Architect	Ar. Ashwani Duggal, Subash & Associates
Location	Chandigarh
System Color	Sparkling Grey
System Type	ASS39NI, AW40NI

Project Type	Trident Budni, Bhopal
Year	2016
Architect	Habitat Architects
Location	Budni, Bhopal
System Color	Green
System Type	Flush Track, AW40NI





Project Type	Residential
Year	2016
Architect	Ar. Aman Aggarwal, Charged Voids
Location	Chandigarh
System Color	Wood Finish
System Type	ASS39NI, AW40NI

Project Type	Residential
Year	2016
Architect	23 DC Architects, Ar. Shiv Dada, Ar. Mohit Chawla
Location	Model Town, Jalandhar
System Color	Grey
System Type	ASS39NI, AW40NI





Project Type	Commercial - The Hermitage Park
Year	2017
Architect	Ar. Ashutosh Handa, Designer Inc.
Location	Zirakpur
System Color	White
System Type	SC50NI

Project Type	Commercial
Year	2017
Architect	Ar. Manmohan Kochar
Location	Delhi
System Color	Matt Black
System Type	AW40NI





Project Type	Centra Green
Year	2017
Architect	Dham Consultants
Location	Ludhiana
System Color	Grey
System Type	Flush Track, AW40NI

Project Type	Office
Year	2018
Architect	Ar. Harpreet Dhillon
Location	Ludhiana
System Color	Matt Grey
System Type	ADS50NI, AWS50NI





Project Type	Residential
Year	2018
Architect	Ar. Aman Aggarwal, Charged Voids
Location	Sec. 35, Chandigarh
System Color	Sand Grey
System Type	Troptec, AS39SCNI





Project Type	Residential
Year	2018
Architect	Ar. Ashwani Duggal, Subash & Associates
Location	Sec. 2, Chandigarh
System Color	Grey
System Type	Troptec, Classic Louvers & Facades





Project Type	Residential
Year	2018
Architect	Ar. Varun Khosla, Khosla & Associates
Location	Ludhiana
System Color	Dark Wenge
System Type	AW40NI





Project Type	Residential
Year	2018
Architect	Ar. Manish Kapoor
Location	Ludhiana
System Color	Dark Wenge
System Type	AS39SCNI, AW40NI





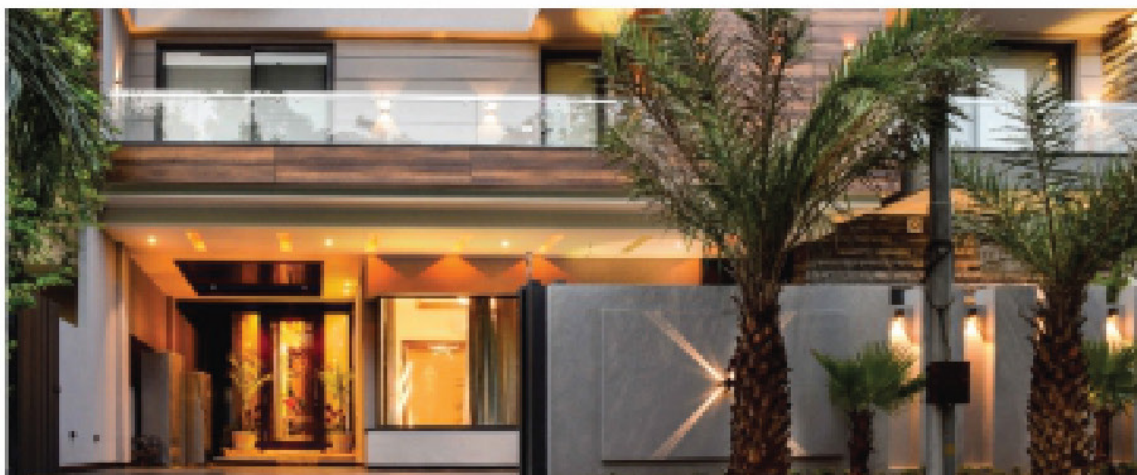
Project Type	Commercial - Mukut House
Year	2018
Architect	Ar. Praneet Babbar
Location	Amritsar
System Color	Anodic Bronze
System Type	AW40NI, SC50NI



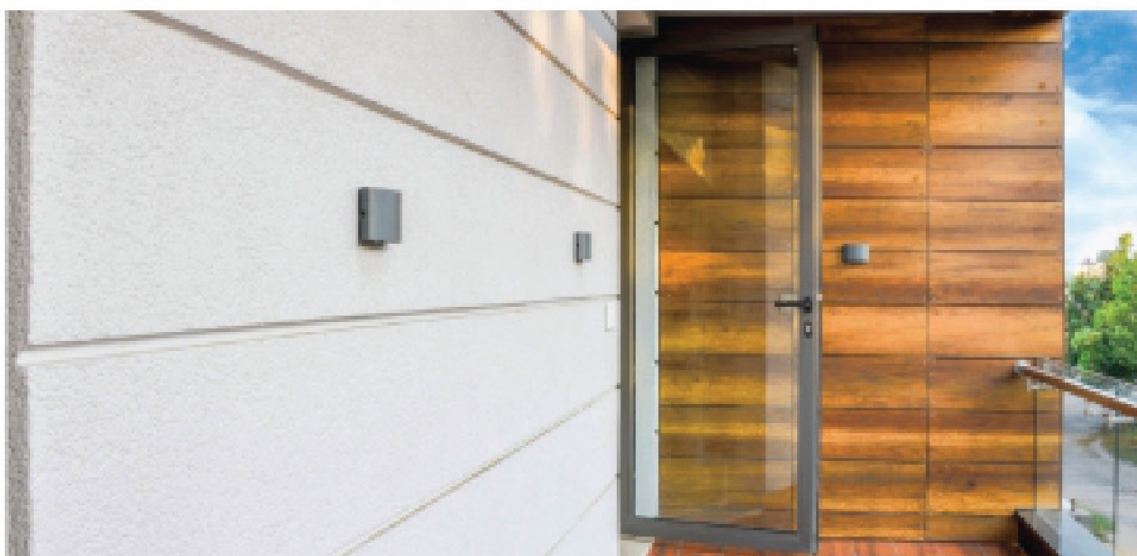
Project Type	Commercial - Courtyard Marriot
Year	2018
Architect	PMC Micromount
Location	Amritsar
System Color	Matt Grey
System Type	SC50NI, AW40NI



Facades



Project Type	Residential
Year	2018
Architect	Ar. Sanjeev Singla
Location	Ludhiana
System Color	Matt Grey
System Type	TropTec AW39NI





Project Type	Commercial
Year	2018
Architect	Ar. Simran
Location	Ludhiana
System Color	Sparkling Grey
System Type	AW40NI





Skylights

BRAND BUYERS



WHY US ?

BENEFITS FOR ARCHITECTS, PMC & END CUSTOMER

- Stylish **German design** aluminum systems.
- Wide choice of **styles**.
- European quality based on **German engineering** at Indian market prices.
- German design taking into consideration Indian manufacturing constraints.
- **Certified systems** for Indian climate conditions eg. torrential monsoon and cyclone.
- Fulfillment of customer requirements.
- **Noise and dust proof**.
- Large element sizes with **narrow face widths**.
- **Watertight** even during heavy torrential rain.
- **High wind** stability.
- **Maintenance free** and long lasting.
- Optional features such as **Fly screen**.
- Insulation glazing for **energy efficiency**.
- **Window sill** profile for optimal protection of the building structure.
- **Local warehouse** storage for fast delivery.
- Schüco **experience** for over 60 years.
- Lumani experience for over **16 years** in Doors & Windows industry.
- LUMANI Schüco offers products and components for the whole building envelope: One-stop solution.
- Smooth operation of the project.
- All components from one source integrated solutions.
- LUMANI Schüco's window and façade systems were all fully tested and certified according to European /American test standards.
- Certified systems for the highest demands.
- Resistant to heavy wind loads.
- Resistant to torrential rains.
- German quality at Indian market prices for the Indian middle, high end and luxury market.
- Web Inquiry tool for easy pricing and ordering for web.
- Expert advice from the LUMANI Schüco back office.
- Sales & operation team for pre sales & after sales with technical expertise.



Head Office : # F 18, 19, 20, Surya Arcade, National Road, Ghumar Mandi, Ludhiana, Punjab

0616-5016251,5051252,88720-50715, care@lumanisystems.com, www.lumanisystems.com

Chandigarh Office: First Floor, Shop No. 10,11,12, Motiaz Royal Citi, Chandigarh-Ambala Highway, Zirakpur, Punjab, INDIA.

Dehradun Office : First Floor, Durga Tower, GSM Road, Dehradun, INDIA